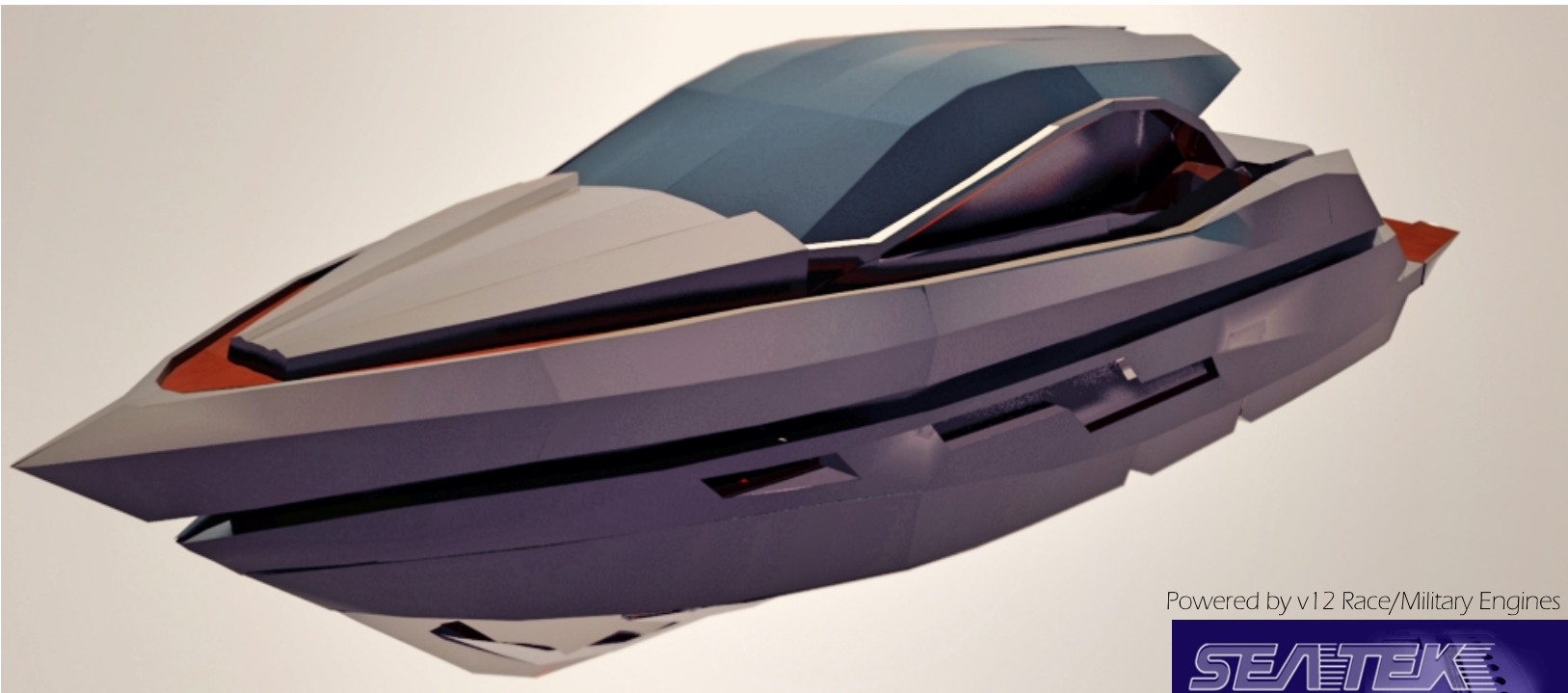


Gibraltar 60 GT



Powered by v12 Race/Military Engines

SEATEK

G60GT - High Performance Motor Yacht

LOA: 18m
Beam: 4.66m
Min Draft: 0.9m
Max Draft: 1.1m
Speed:

Cruising 42 knots
Max 50 knots

Year: Mfg-2016
Builder: Gibraltar Nautika
Type: High Performance
Price: approx. (\$1,695,000 USD)
1 500 000 € EUR
Location: CROATIA, EU

Member of  YACHTWORLD

LOA: 59' 5" (18.00m)
 Beam: 15' 4" (4.66m)
 Min Draft: 3' (0.9m)
 Max Draft: 3' 7" (1.1m)
 Hull Material: 100% Solid Fiberglass
 Hull Config: Deep V - Twin Stepped
 Vented Hull

Year: Mfg-2016
 Builder: Gibraltar Natutika
 Model: 60 GT
 Type: High Performance
 Speed: Cruising 42 knots
 Max 50 knots

Engines: 2x 1400 HP,
 each V12 Twin Turbo Charged
 SeaTek v12

Designer: Gibraltar Natutika DS
 Deck Material: Cultured Teak
 Tonnage (Dry): (49600lb) 22.5ton
 Range: 400kn at 40kn/h
 IntDesigner: Linda Raic
 ExtDesigner: Linda Raic
 Fuel Capacity: 845 gal (3200 l)
 Water Capacity: 172gal (650 l)
 Holding Tank: 2x40 gal (2x175 l)
 Location: CROATIA
 Price: 1 500 000 € EUR

Master Bedroom: 2
 Guest Cabin: 1
 Crew Cabin: 1
 Heads: 3

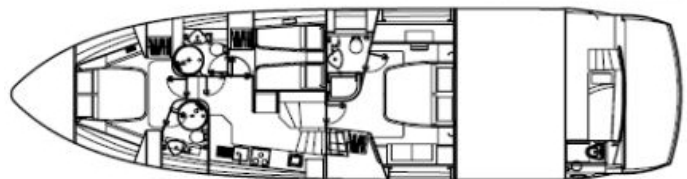
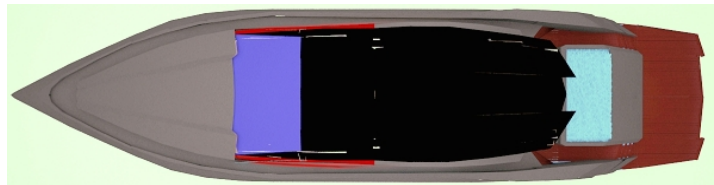
Classification: RCD CE

Accommodations

- 2 Twin Master Cabins, each with bahtroom
- Guest's cabin up to 4 beds
- Crew cabin, own bath/ shower
- Full sized kitchen, Bosch Appliances
- Salon with entertainment wall, and bar
- Bow and Stern deck seats/Sun cushions
- Professional HEPA AirConditioning unit 50 000 BTU, separate controls in each cabin

Audio And Visual Equipment

- Visual, 32-40" Samsungs/LG'sAudio;
- Audio, Bluetooth Premium BOSE/JBL Speakers for both Masters



Construction/Scantlings

100% Solid laminate* Hand layed/Infused.

Multiaxial Glass following loads, Carbon Fiber reinforced. Skin made out of Epoxy based VE resin. Full ring composite web frames transversely and longitudinally per each cabin - making closed rings, 5x Full Size bulkheads, passes LLOYD's SSC, Hullscant (Rcd CE) at high speeds. And slamming 4 - 8m waves, the most important.



Hull and Deck is made out of 100% Solid Fiberglass, Epoxy based Vinyl Skin. Middle Bottom Area is close to 1" thick, (25mm) and holds cca 10kg of heavy duty fiber,



Warranty

Hull warranty: 5 years

Electronics/Equipment: 1 year

Engines: 2 Years Manufacturer Warranty*. Service interval as recommended must be followed.

* VOLVO PENTA, AS ALTERNATIVE GIVES 5 YEARS, NOT HIGH PERFORMANCE ENGINE AS SEATEK.



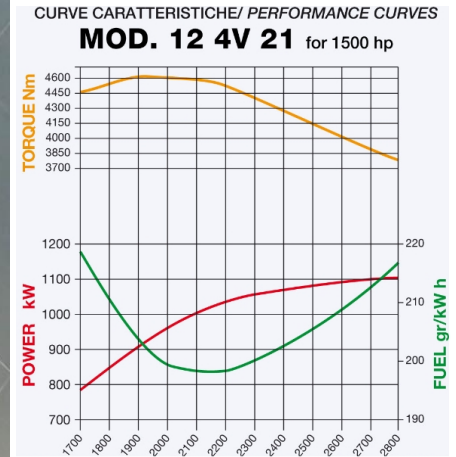
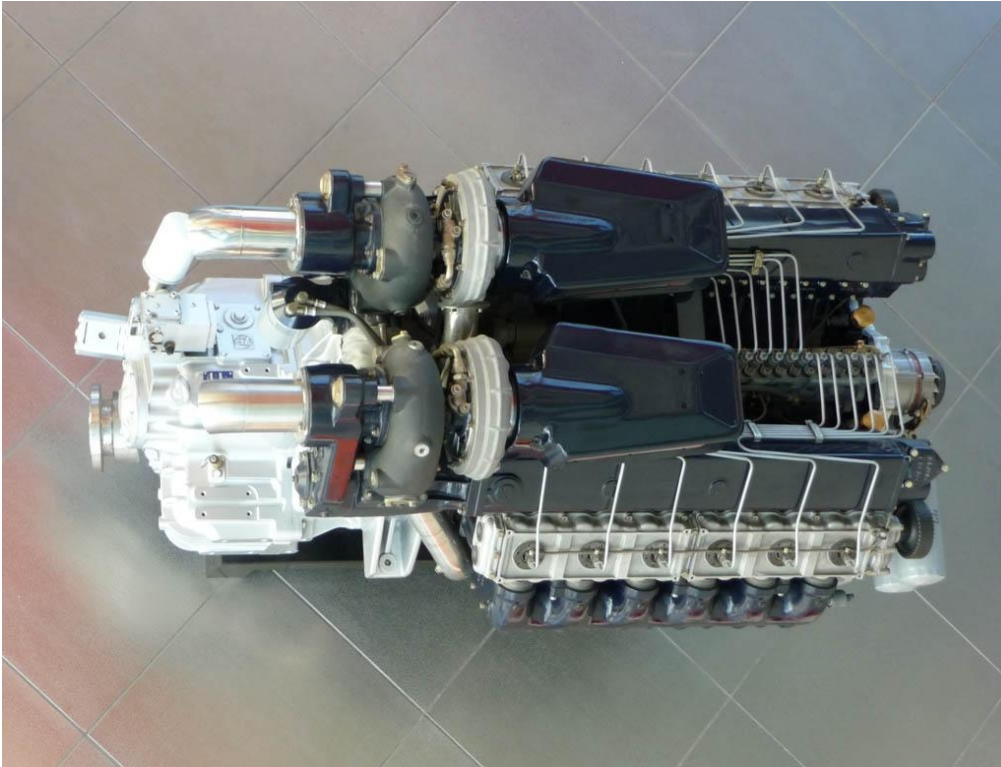
Structure warranty could be advertised as lifetime, but you'll never need one. Strength is calculated to be at least equal to same length Heavy Duty Pilot boat troublefree in severe service for past 10+ years without signs of weakness. Any part of Gibraltar you lay your hand on, You can trust, is strong as this beast here.

* Cored laminate was and still is avoided from many professional pilot boat builders, no matter the market hype, they believe in solid units as safer choice, Cores have low puncture resistance, and likelihood for eventual delamination, main reason is that fiber weight (main rule for strength) is reduced up to half.

Member of 

Engines

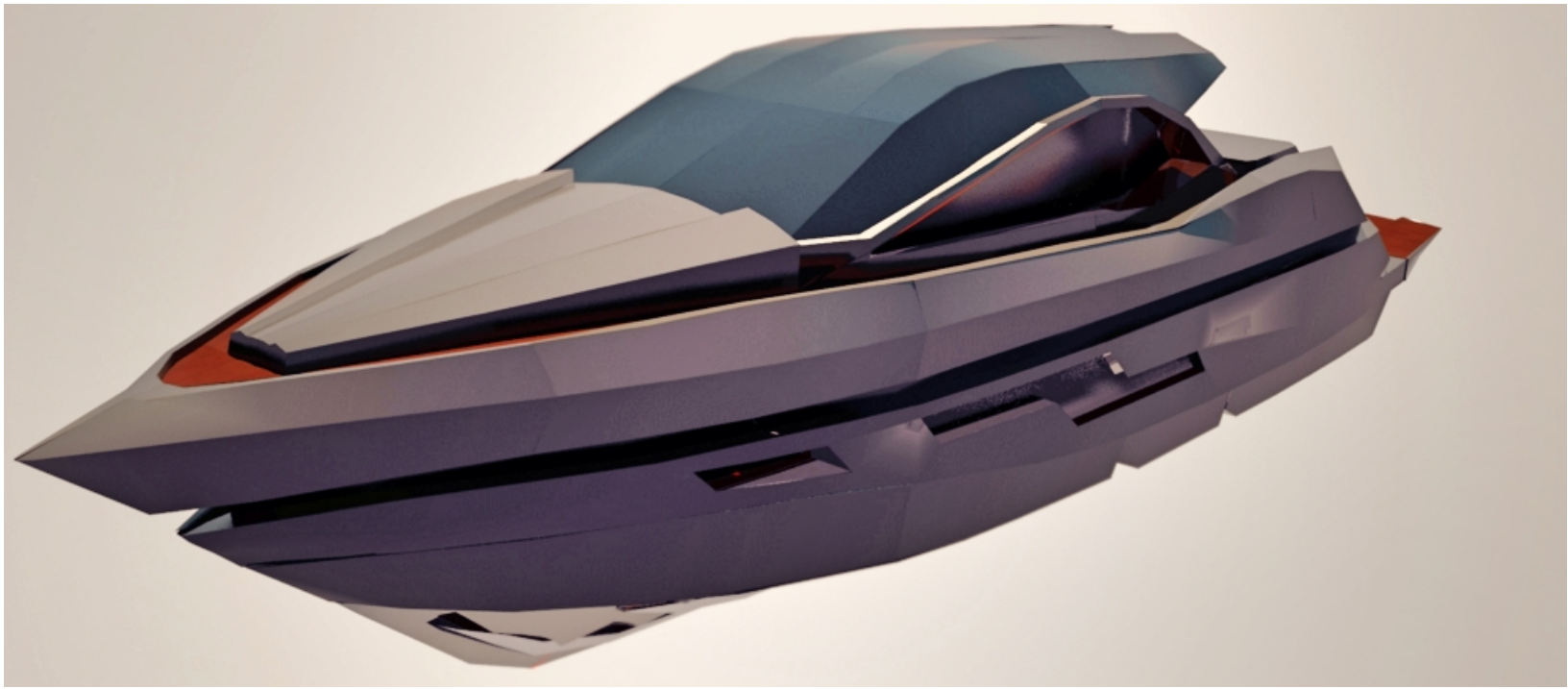
Twin v12 Seateks, Quad turbocharged Diesels, adding up to 2800HP, over 9000Nm of torque.



Twin V12 Seateks, Quad Turbocharged Diesels paired with Jets/Surface Drives are Top choice for Racing/Military Applications. Its Lamborgxxxii at sea, well even they are using it.

Information Disclaimer

Every attempt has been made to give accurate information, but performance and range figures are estimates, given as guide only. Dirt or growth on the hull, tuning of the engines, etc., make of the engines fitted, damages to propellers, temperature of air and water, sea and wind conditions, weight of fuel, water, stores, number of people, quality of fuel and other matters, extra equipment installed, can all affect considerably the boat's performance and range. or these and other reasons, no guarantees on performance and range can be given and neither such guarantees constitutes an offer of contract or any representation or agreement or may otherwise relied upon.



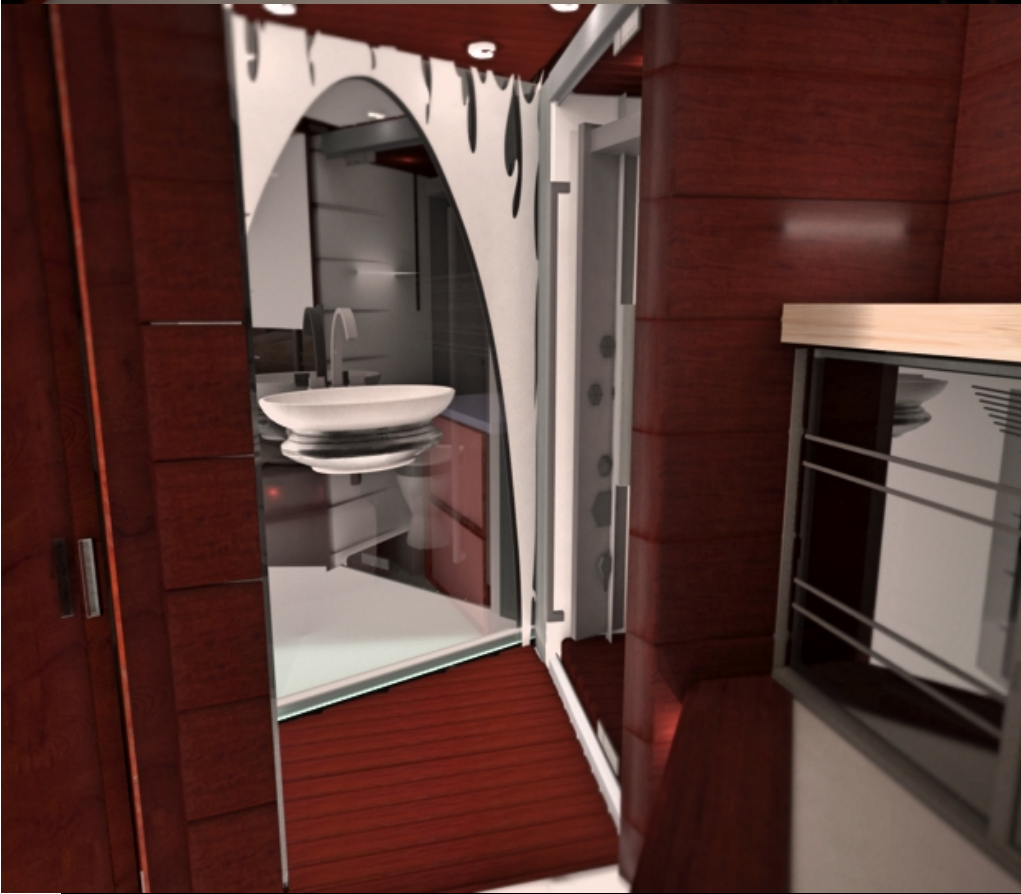
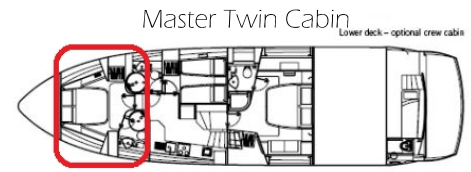
Saloon

Saloon Beams
Option in Real Carbon
Fiber

Saloon is fully closed
with glass door, under
AC

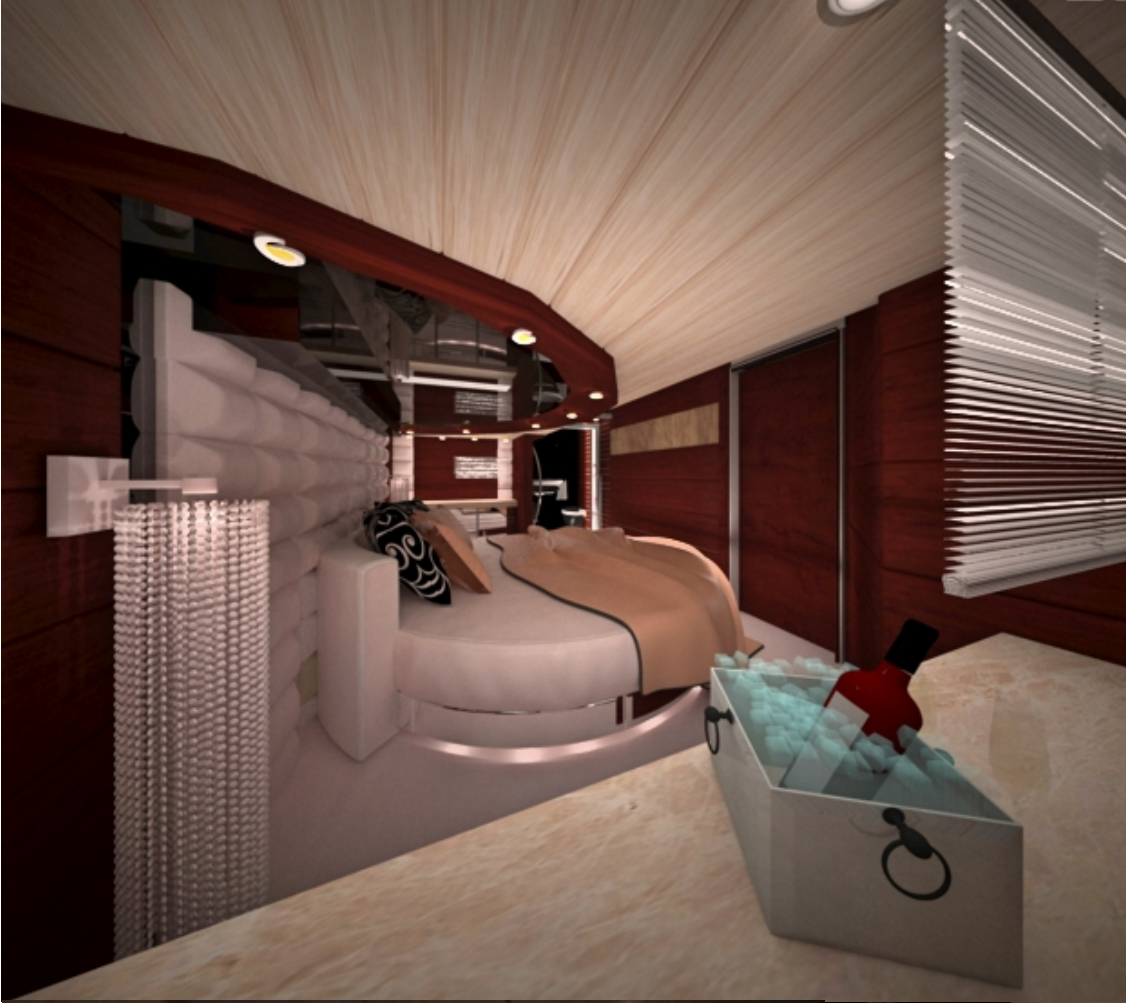


Master Twin Cabin

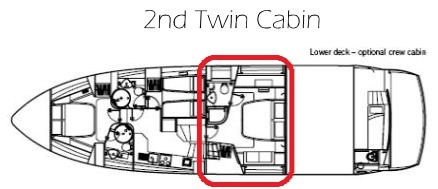


Master Bathroom

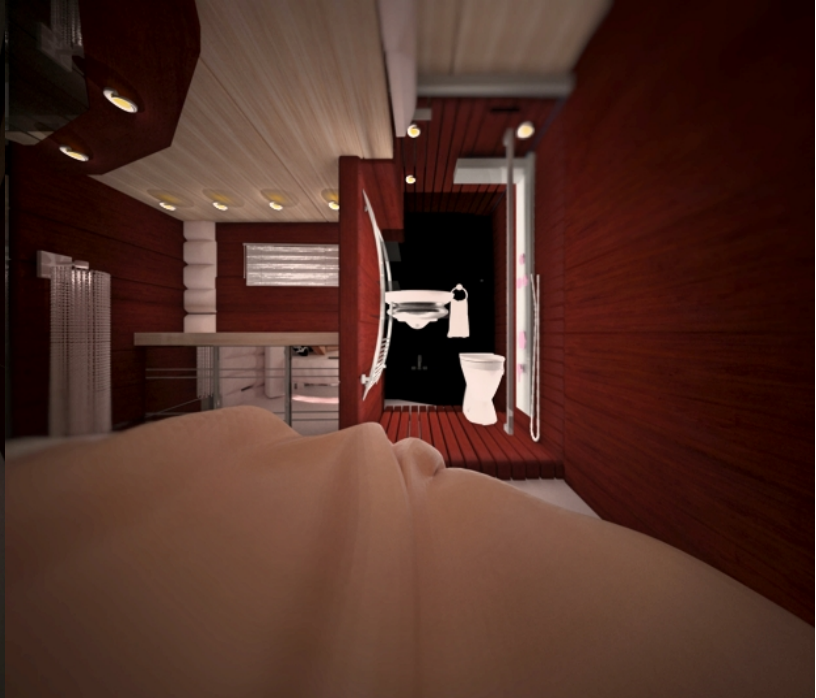
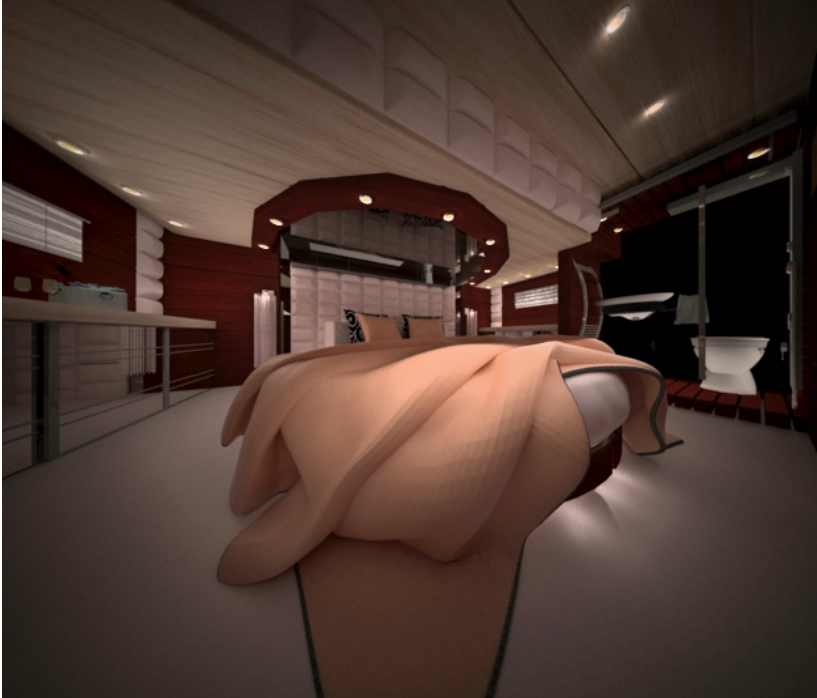




2nd Twin Cabin



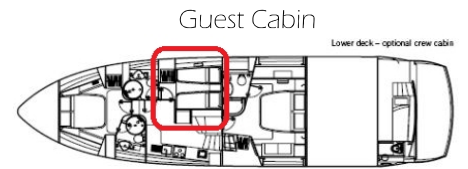
2nd Twin Cabin



2nd Twin Cabin Alternative Design



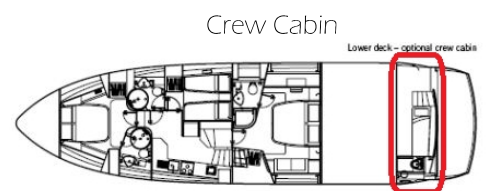
Guest Cabin



4 Berth setup possible



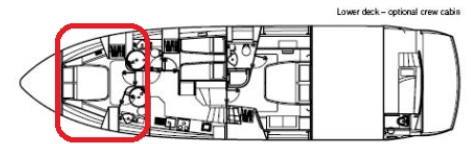
Crew Cabin



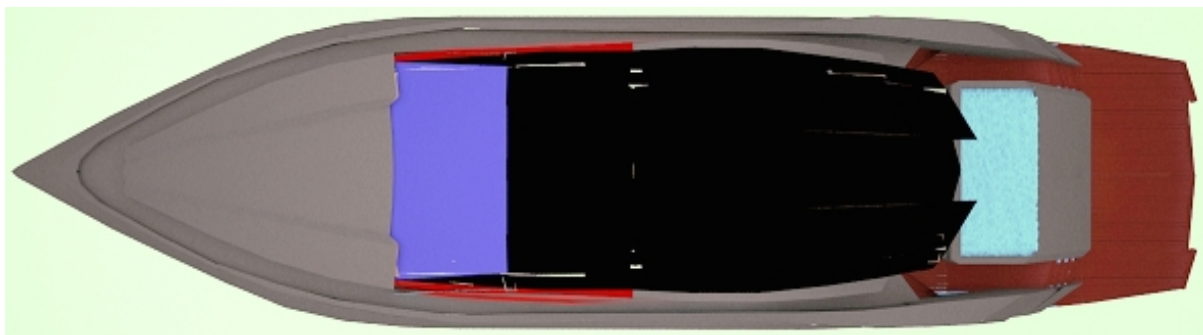
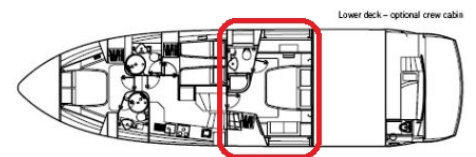


Conservative Design

Master Twin Cabin



2nd Twin Cabin

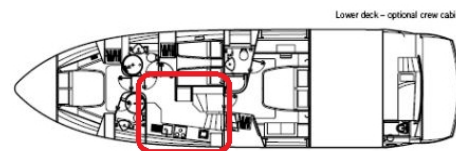




Guest Cabin



Kitchen



Member of 







Rolls-Royce

Member of  YACHTWORLD